



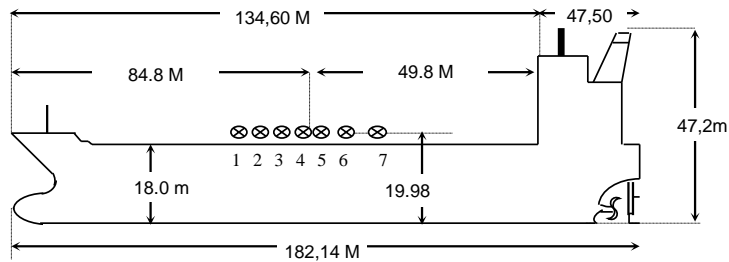
PVT EAGLE SHIP'S PARTICULARS

NAME	PVT EAGLE	KEEL LAID	12-Oct-95
CALL SIGN	XVFF	LAUNCHED	20-Sep-97
FLAG	VIET NAM	DELIVERED	12-Jan-98
PORT OF REGISTRY	SAI GON	SHIPYARD	Kherson Shipyard ,Kherson,Ukraine
OFFICIAL NUMBER	VNSG-1934-TD		
IMO/LOYS NUMBER	9145425		
CLASS SOCIETY	DNV(ID-19741/VR(CLASS NO 983066))		
CLASS NOTATION	1A1 ICE-C Tanker for Oil and Chemicals ESP		
P & I CLUB	Steamship Mutual Management(Bermuda) Limited(SSM)		

SATELLITE COMMUNICATION	
	INMARSAT-C
E-MAIL	master.pvt eagle@amosconnect.com
PHONE	764,887,416
FAX	764,887,417
TELEX	457442710 457442711
MMSI	574427000
EX. NAMES	CHEM TULIP
CS / FLAG	VIETNAM

OWNERS	SOUTHERN PETROLEUM TRANSPORTATION JOINT STOCK COMPANY , 4 FLOOR -H3 TOWERS- 384 HOANG DIEU ROAD , DIST.4 -HO CHI MINH CITY-VIETNAM PHONE :(84)839111517 - FAX : (84)838297469
OPERATORS	PVTRANS SHIPS MANAGEMENT, M Floor – PVFCCo Tower, 43 MAC DINH CHI, DAKAO WARD, HO CHI MINH CITY, VIETNAM , TEL : 84-8- 3822 8339-FAX: 84-8- 3822 8566

PRINCIPAL DIMENSIONS	
LOA	182.14 m
LBP	168.18 m
BREADTH (Extreme)	25.30 m
DEPTH (molded)	18.0 m
HEIGHT (maximum)	47.2 m
BRIDGE FRONT - BOW	134.60 m
BRIDGE FRONT - STERN	47.5 m
BRIDGE FRONT - MFOLD	49.8 m



TONNAGE	REGD	SUEZ
NET	11031	18442.3
GROSS	21609	22979.2
GROSS Reduced (R'n:13495)	17613	

TANK CAPACITIES (cbm)					
CARGO TANKS (98 %)			BLST TKS (100 %)		
1Ws	3510.4	SLOP Ws	1214.4	F.P.TK.	935.0
2Ws	5147.0	F.W Tanks 100%		WBT 1Ws	2222
3Ws	5427.2	TCFW TK (P)	379.0	WBT 2Ws	1822
4Ws	5427.2	TCFW TK (S)	379.0	WBT 3Ws	1662.0
5Ws	5427.2	FW General (P)	89	WBT 4Ws	1662.0
6Ws	5427.2	FW General (P)	141	WBT 5Ws	1662
7Ws	5315.6	DRNK FW TK (P)	44	WBT 6Ws	1662
		DRNK FW TK (S)	30	WBT 7Ws	1332
		DIST WATER (S)	74	Afterpeak	486
TOTAL	35681.8	TOTAL	1136	TOTAL	13445.0
OTHER DETAILS					
H. Level Alarm	95%				
Overfill Alarm	98%				

LOAD LINE INFORMATION	FREEBOARD	DRAFT	DWT
TROPICAL	5.444m	12.556m	n/a
SUMMER	5.714 m	12.30m	32,425
WINTER	5.97	12.03m	32,200
LIGHTSHIP	14.57	3.43	10,933
NORMAL BALLAST COND	10.93	7.07	24,237
SEG. BALLAST COND	11.32		22,816
DWT WITH SBT ONLY		12,341	
FWA		272 mm	
TPC @ Summer draft		40.70	

MACHINERY / PROPELLER / RUDDER	
MAIN ENGINE	BMZ 6D KPH 60/195-10(MAN B&W)
M.C.R.	8380 KW @ 114 RPM
N.C.R.	7943 KW @ 111 RPM
MAX CRITICAL RANGE	57-67 / 78-80 RPM
AUX. BOILER	Rated output 8.0 /8.0 tons/hour
GENERATOR (3 sets)	3x880 KW @1000 RPM Mak M20
EMER D.G.	1 x 220 KW, @ 1500 RPM Type A 12-B-
PROPELLER	4-Blade, Fixed pitch, D=4256 mm
RUDDER	Semi-blanced, 26 M2
STEERING GEAR	Cylinder type
FW GENERATOR CAP	RUSSIA, 1.0 MT/H

BUNKER TANKS	
DEEP TK	897.0 cum
2 FOT (P)	181,0 cum
3 FOT (S)	194,0 cum
FO SEET #1	35.56 cum
FO SEET #2	35.56 cubm
D SERVICE #1	71.27 cubm
FO OWEFR#1	139.4 cubm
TOTAL	1554 cubm
DOT (P)	55.0 cum
DOT (S)	55.0 cum
1 DO Srv	7,5 cum
2 DO Srv	8,5 cum
TOTAL	126,0 cum

WINCHES / WINDLASS / ROPES / EMERGENCY TOWING			
	FWD	AFT	PARTICULARS
WINCHES	3 (d.drmm)	3 (d.dr)	HAULING SPEED 0-20 m/min
MRG Ropes	7	7	60mm KAPA FLEX, 69.70t
Winch BHC	41	41	
WINDLASS	2	NIL	HAULING SPEED 9.0 m/min
FIRE WIRE	2	1	28mm
ANCHOR	2	0	12 SHACKLES (each)
EMG. TOWING	1	1	MBL 70.4 t
			TYPE :SPINDI DRUM 61mm/70.4 t MBL

CARGO AND BALLAST PUMPING SYSTEM				
MAIN PUMPS	NO.	CAPACITY	HEAD	RPM
CARGO D/WELL	10	425 m3/h	130 mlc	2089
CARGO D/WELL	6	230 m3/h	130 mlc	2543
STRIPPING PUMP	NA			
CARGO EDUCTOR	NA			
BALLAST CENTRIF	2	1000 m3/h	26 m	1516
BALLAST EDTR	1	160 Cm/hr	10 M	

LIFE BOATS	
	2x30 persons
Type:	fireprotected
	totally enclosed
	lifeboat

MANIFOLD ARRANGEMENT		
Distance of cargo manifold to cargo manifold		2050 mjm
Distance of cargo manifold to vpr. return manifold		4020 mm
Distance of top of rail to centre of manifold		720 mm
Distance of manifold to ship side		4470 mm
Distance of manifold from keel		20.09 m

CARGO HOSE CRANES	
	1 Set x 10 T

Min Bow Drft:	5.1m
Blst Drft:	F:6.85m, A 7.31
MARPOL Trim:	2.73 m
Propeller Immer:	:6,7m

FIRE FIGHTING SYSTEM	
E/RM	CO2
PUMP ROOM	CO2
CARGO/DK AREA	Low Expansion Foam

IG / VAPOR EMISSION / VENTING	
IG BLOWER CAPACITY	4000 cubm/h
P/V VALVE PR./ VAC. SETTING	1370 / -350
P/V BREAKER PR./VAC. SETTING	NA

MASTER OF PVT EAGLE