



PSM
PVTRANS SHIPS MANAGEMENT

PVT SEALION SHIP'S PARTICULARS

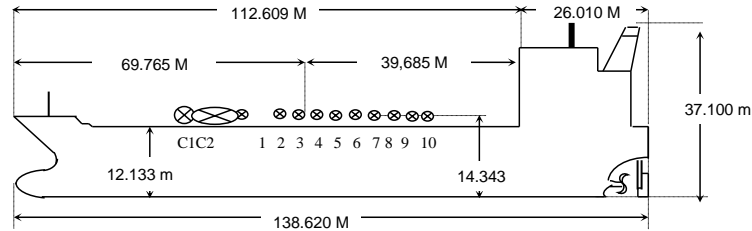
NAME	PVT SEALION
CALL SIGN	3VVJ
FLAG	VIETNAM
PORT OF REGISTRY	HAI PHONG
OFFICIAL NUMBER	VN-3654-TD
IMO/LLOYDS NUMBER	9123362
CLASS SOCIETY	BV/VR
CLASS NOTATION	BV + A1 Chemical carrier + AMS
P & I CLUB	Maritime Muture

KEEL LAID	16. Feb. 1995
LAUNCHED	29. May. 1995
DELIVERED	04. Oct. 1995
SHIPYARD	Shin Kurushima Dockyard Co. Ltd.

SATELLITE COMMUNICATION	
E-MAIL	pvtsealion@qtships.com
PHONE	
PHONE	+870 773 158 535
FAX	+870 783 201 996
INMARSAT-C	457488610 457442711
MMSI	574886000
EX. NAMES	SPRING ORION / AL MARWAH
CS / FLAG	VIETNAM

OWNERS	PETROVIETNAM TRANSPORTATION HA NOI JOINT STOCK COMPANY
OPERATORS	PVTRANS SHIPS MANAGEMENT - M Floor PVFCCo Tower, 43 Mac Dinh Chi Str, District I, Ho Chi Minh City, VietNam.

PRINCIPAL DIMENSIONS	
LOA	138.62 m
LBP	130.6 m
BREADTH (Extreme)	21.84 m
DEPTH (moulded)	12.133 m
HEIGHT (maximum)	37.10 m
BRIDGE FRONT - BOW	112.609 m
BRIDGE FRONT - STERN	26.010 m
BRIDGE FRONT - MFOLD	43.009 m



TONNAGE	
NET	4834
GROSS	9544

TANK CAPACITIES (cbm)					
CARGO TANKS (100 %)		F.W Tanks 100%		BLST TKS (100 %)	
1Ws	1244.484	Drink water tank(P)	74.04	WBT 1Ws	599.06
2Ws	2563.986	Drink water tank(S)	74.04	WBT 2Ws	906.07
3Ws	928.780	Fesh Water Tank	76.11	WBT 3ST Ws	427.74
4Ws	1422.040	Dist Water tank	76.11	WBT 3DB.Ws	384.13
5Ws	2675.354	TOTAL	300.30	WBT 4ST Ws	450.62
6Ws	2676.256	T.C.F.W.T (P)	47.04	WBT 4DB .Ws	416.08
7Ws	1419.084	T.C.F.W.T (S)	47.04	WBT 5ST Ws	436.98
8Ws	935.056	FPT(WB/FW)	442.49	WBT 5DB Ws	415.89
9Ws	2471.358	AFT(WB/FW)	190.70	WBT 6ST Ws	393.98
TOTAL	16336.398	TOTAL	727.27	WBT 6DB Ws	358.80
SLOP	680.796			WBT 7 Ws	1254.47
				TOTAL	6043.82
				FPT(WB/FW)	442.49
				AFT(WB/FW)	190.70
GRAND TOTAL	17017.194				6677.01

LOAD LINE INFORMATION		
TROPICAL	2.872 m	9.261 m
SUMMER	3.061 m	9.072 m
WINTER	3.250 m	8.883 m
LIGHTSHIP	9.939 m	2.194 m
NORMAL BALLAST COND	7.123 m	5.010 m
DWT WITH SBT ONLY		6,247.5
FWA		203 mm
TPC @ Summer draft		25.34

OTHER DETAILS	
H. Level Alarm	95%
Overfill Alarm	97%

MACHINERY / PROPELLER / RUDDER	
MAIN ENGINE	Makita - Mitsui B&W 7L35MC Mark6
M.C.R.	4530 KW @ 210 RPM
N.C.R.	4077 KW @ 203 RPM
MAX CRITICAL RANGE	57-67 / 78-80 RPM
AUX. BOILER	Capacity: 15.000 Kg/h
GENERATOR (3 sets)	3 x 320 KW
EMER D.G.	1 x 65 KVA
PROPELLER	4-Blade, Fixed pitch, D=3750 mm
RUDDER	Semi-blanced, 18 M2
STEERING GEAR	Cylinder type
FW GENERATOR CAP	JWP-26-C80 / 15 TON/24H

BUNKER TANKS	
No1 FO (P)	278.21 m ³
No1 FO (S)	278.21 m ³
No2 FO (P)	159.30 m ³
No2 FO (S)	57.63 m ³
No3 FO (P)	113.68 m ³
No3 FO (S)	113.05 m ³
TOTAL	1000.08 m³
DOT (P)	44.80 m ³
DOT (S)	29.16 m ³
TOTAL	73.96 m³

WINCHES / WINDLASS / ROPES / EMERGENCY TOWING			
	FWD	AFT	PARTICULARS
WINCHES	2	2	Max Hauling speed: 15 m/min
MRG Ropes	8	8	Dia: 52 mm, polypropylene-polyester mix, 220 m, MBL: 55.0 T
Winch BHC	31	31	(60% of rope's MBL)
WINDLASS	2	NIL	Max Hauling speed: 9.0 m/min
FIRE WIRE	1	1	Dia: 28mm; MBL: 54.4 MT
ANCHOR	2	1	(2460 MT / each; 10 shackles (each side))
EMG. TOWING	1	1	Working strength: 100 T; Fair lead's MBL: 100 T Chafe chain (52 mm x 3m) jointed to stopper.
		1	Working strength: 100 T; Fair lead's MBL: 100 T Pick up towing wire.

CARGO AND BALLAST PUMPING SYSTEM				
MAIN PUMPS	NO.	CAPACITY	HEAD	PRESS
CARGO D/WELL	8	300 m ³ /h	80 mlc	181 bar
CARGO D/WELL	6	200 m ³ /h	80 mlc	182 bar
CARGO D/WELL	6	150 m ³ /h	80 mlc	175 bar
CARGO EDUCTOR	NA			
BALLAST CENTRIF	1	250 m ³ /h	25 m	
BALLAST EDTR	1	No information		

LIFE BOATS	
1 x 25 persons	
Type: Free fall life boat	
Fire protected	
Totally enclosed	
lifeboat	

MANIFOLD ARRANGEMENT	
Distance of cargo manifold to cargo manifold	375 mm
Distance of cargo manifold to vapour. return manifold	480 mm
Distance of top of rail to centre of manifold	1170 mm
Distance of manifold to ship side	3300 mm
Distance of manifold from keel	14.343 M

CARGO HOSE CRANES	
1 Set x 05 T - 15 M	

Min Bow Drft:	3.920 m
Blst Drift: F:	4.41m, A: 5.61 m
MARPOL Trim:	2.079 m
Propeller Immersion:	4.497 m

FIRE FIGHTING SYSTEM	
E/RM	CO2
PUMP ROOM	NA
CARGO/DK AREA	Low Expansion Foam

IG / VAPOR EMISSION / VENTING	
USCG VAPOUR ALARM SETTING:	+0.18 / -0.35 kgf/cm2
PRESSURE / VACUUM VALVE SETTING	+0.20 / -0.35 kgf/cm2
P/V BREAKER PR./VAC. SETTING	NA